

PARTS LIST FOR

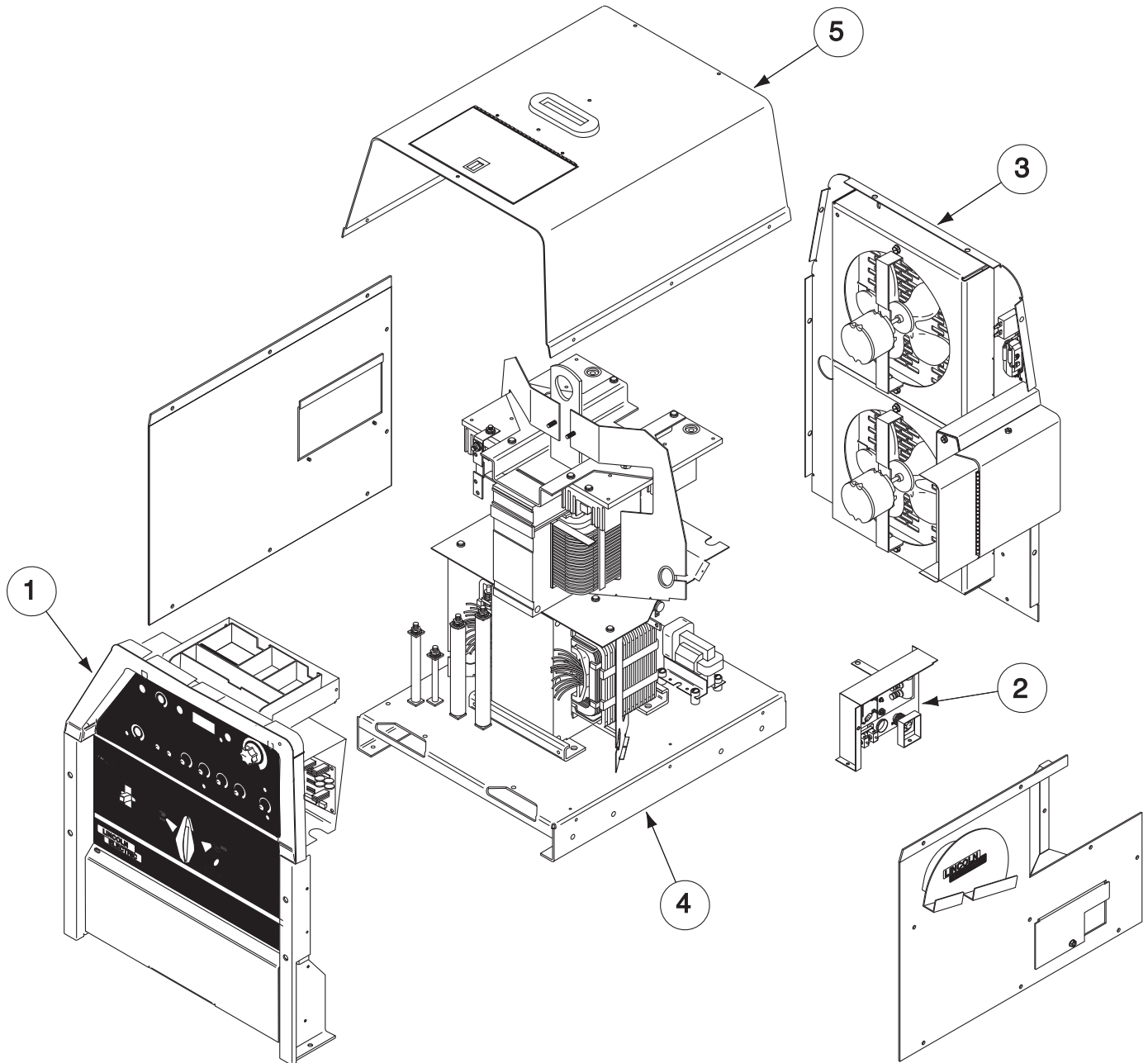
Precision TIG[®] 275 & 375

Index of Sub Assemblies
Illustration of Sub Assemblies
Index of Sub Assemblies
Illustration of Sub Assemblies
Index of Sub Assemblies
Illustration of Sub Assemblies
Index of Sub Assemblies
Illustration of Sub Assemblies

Precision TIG[®] 275 & 375



ILLUSTRATION OF SUB-ASSEMBLIES



Index of Sub Assemblies

OPTIONAL EQUIPMENT LISTING

Miscellaneous Options Available for your machine are listed below:

Indicates a change this printing.

DESCRIPTION	PART NUMBER
Arc Start Switch	Order K814
Foot Amptrol	Order K870
Start Pedal Foot Amptrol	Order K870-1
Hand Amptrol (For PTA-9, PTA-17 & PTW-20 TIG Torches)	Order K963-1
Hand Amptrol (For PTA-26, PTA-18 & TIG Torches)	Order K963-2
Under-Cooler Cart	Order K1828-1
Undercarriage	Order K1869-1
Precision Tig Advanced Control Panel	Order K1829-1
Water Solenoid Kit	Order K1830-1
Power Factor Capacitor Kit	Order K1831-1
Work Lead Assembly	Order K2150-1
PTA-26 Torch Adapter (For 1 Piece Torches)	Order K2166-1
1/2" Stud Connector (For All PTA-2-Piece Torches)	Order K2166-2
3/8" TIG Torch Connector (For PTA-9, PTA-17) (1-Piece Torches)	Order K2166-3
PTA-26 Torch Adapter (1-Piece Torches)	Order K2166-1



Index of Sub Assemblies

Indicates a change this printing.

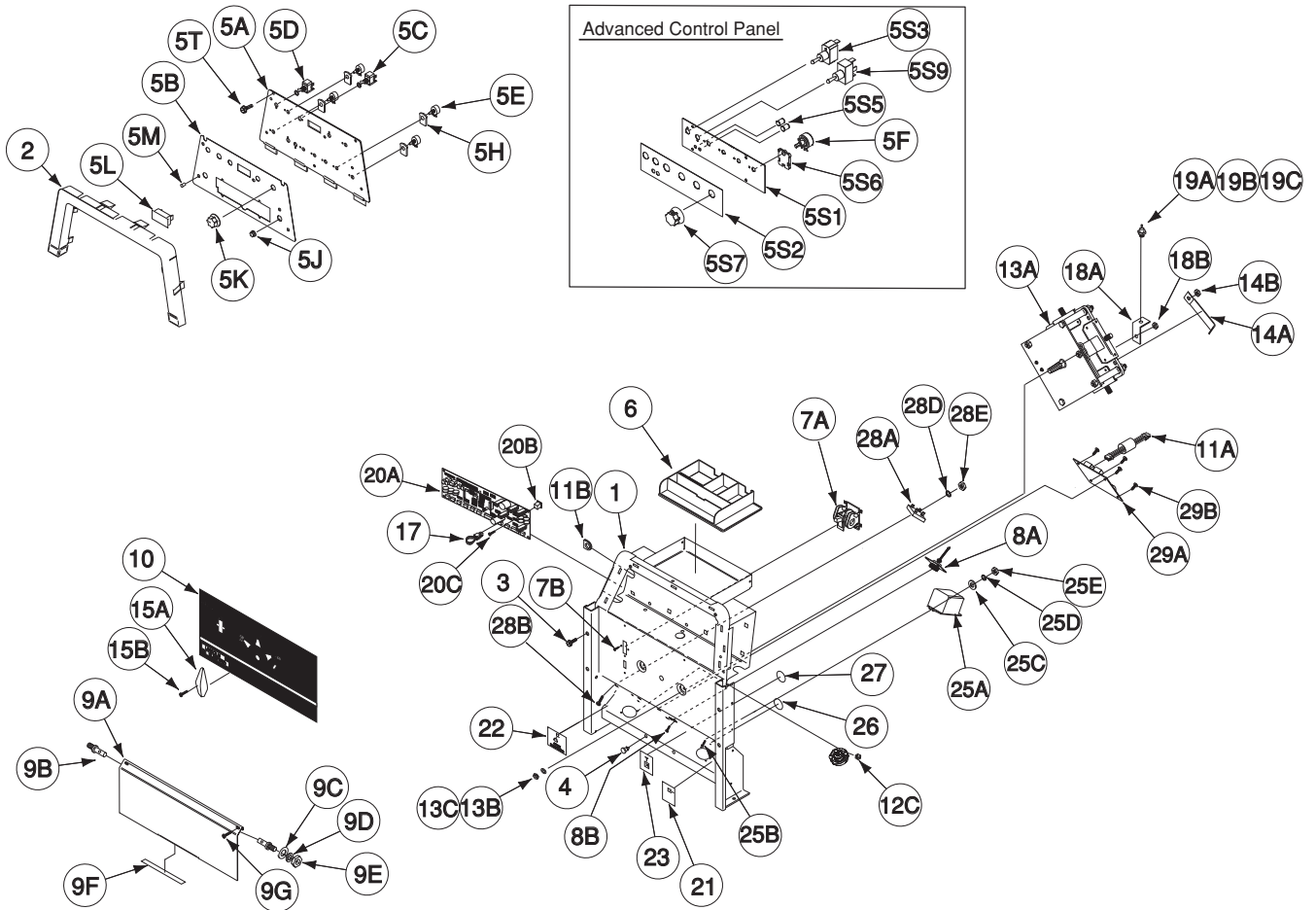
Use only the parts marked "x" in the column under the heading number called for in the model index page.

DESCRIPTION	PART NO.	QTY.	1	2	3	4	5	6	7	8	9
Case Front Harness	G4098	1	•	X	•	•					
Case Front Harness	G5843	1	•	•	•	X					
Plug & Lead Assembly	S18250-773	1	X	X	•	•					
Plug & Lead Assembly	S18250-931	1	•	•	X	X					
Hi Freq. Intensity Bracket	M19959	1	•	X	•	X					
Bypass P.C. Board Assembly	L10882-[]	1	X	X	X	X					
Receptacle & Lead Assembly	S19655-2	1	X	X	X	X					
Green LED	T13657-3H24	3	X	X	X	X					
Yellow LED	T13657-4FA	1	X	X	X	X					
Red LED	T13657-2H24	1	X	X	X	X					
Harness Assembly, Includes:	G4141	1	X	X	•	•					
Harness Assembly, Includes:	G5784	1	•	•	X	X					
Grommet	S18543-4	1	X	X	X	X					
115V Harness Asbly (PT 275), Includes:	G5698	1	•	•	X	•					
115V Harness Asbly (PT 275), Includes:	G4099	1	X	•	•	•					
Grommet	S18543-4	1	X	•	X	•					
Bushing	T12380-1	1	•	•	X	•					
Bushing	T12380-4	1	X	•	•	•					
115V Harness Asbly (PT 375), Includes:	G5699	1	•	•	•	X					
115V Harness Asbly (PT 375), Includes:	G4101	1	•	X	•	•					
Grommet	S18543-4	1	•	X	•	X					
Bushing	T12380-4	1	•	X	•	X					
Bushing	T12380-1	1	•	X	•	X					



Index of Sub Assemblies

Case Front Assembly



Index of Sub Assemblies
 Part Numbers
 Index of Sub Assemblies
 Part Numbers
 Index of Sub Assemblies
 Part Numbers
 Index of Sub Assemblies
 Part Numbers

Indicates a change this printing.

Use only the parts marked "x" in the column under the heading number called for in the model index page.

ITEM	DESCRIPTION	PART NO.	QTY.	1	2	3	4	5	6	7	8	9
1	Case Front Welded Assembly	G3960	1	X	X	X	X					
2	Top Bezel	G4030	1	X	X	X	X					
3	Thread Forming Screw	S9225-89	4	X	X	X	X					
4	Door Bumper	T14882-1	2	X	X	X	X					
	Control Panel Assembly, Includes:	L11631-1	1	X	•	•	•					
	Control Panel Assembly, Includes:	L11632-1	1	•	X	•	•					
	Control Panel Assembly, Includes:	L12927-1	1	•	•	X	•					
	Control Panel Assembly, Includes:	L12929-1	1	•	•	•	X					
5A	Control Panel	L11603	1	X	•	•	•					
5A	Control Panel	L11737	1	•	X	•	•					
5A	Control Panel	L12926	1	•	•	X	X					
5B	Nameplate (G3994-1 - Part of G3994)	NSS	1	X	•	•	•					
5B	Nameplate (G3996-1 - Part of G3996)	NSS	1	•	X	•	•					
5B	Nameplate (G5670-1 - Part of G5670)	NSS	1	•	•	X	•					
5B	Nameplate (G5672-1 - Part of G5672)	NSS	1	•	•	•	X					
5C	Switch (Display Momentary Toggle Switch)	T10800-49	1	X	X	X	X					
5D	Switch	T10800-4	4	X	X	X	X					
	Control Panel Harness (Not Shown), Includes:	L11709-1	1	X	X	•	•					
	Control Panel Harness (Not Shown), Includes:	L12958-1	1	•	•	X	X					
5E	Potentiometer	T10812-119	4	X	X	X	X					
	Advanced Panel Harness (Not Shown), Includes:	L11714-1	1	•	X	•	•					
	Advanced Panel Harness (Not Shown), Includes:	L12959-1	1	•	•	•	X					
5F	Potentiometer	T10812-119	4	•	X	•	X					
5G	Pushbutton Switch (Not Shown)	T15089-1	1	•	•	X	X					
5H	Potentiometer Spacer	S18280	4	X	•	X	X					
5H	Potentiometer Spacer	S18280	8	•	X	•	•					
5J	Rheostat Control Knob	T13639-3	3	X	•	X	X					
5J	Rheostat Control Knob	T13639-3	7	•	X	•	•					
5K	Rheostat Control Knob	T10491-1	1	X	X	X	X					
5L	Digital Meter	M15480-4	1	X	X	•	•					
5L	Digital Meter	M15893-3	1	•	•	X	X					
5M	LED Lens, Clear, Includes:	S23093-1	5	X	X	X	X					
5N	Retaining "O" Ring (Not Shown)	S23094-1	5	X	X	X	X					
5P	Option Panel (Not Shown)	M19811	1	X	•	•	•					
5P	Option Panel (Not Shown)	M21089	1	•	•	X	•					
5Q	#10-24 HLN (Not Shown)	T9187-13	4	X	•	X	•					
5R	Nameplate (G3994-3 - Part of G3994) (Not Shown)	NSS	1	X	•	•	•					
5R	Nameplate (G5670-3 - Part of G5670) (Not Shown)	NSS	1	•	•	X	•					
5S	Advanced Panel Assembly, Includes:	L12928-2	1	•	•	•	X					
5S1	Option Panel	M21089	1	•	•	•	X					
5S2	Nameplate (G5672-3 - Part of G5672)	NSS	1	•	•	•	X					
5S3	Switch	T10800-4	1	•	•	•	X					
5S4	Advanced Panel Harness (Not Shown), Includes:	L12959-1	1	•	•	•	X					
	Green LED	T13657-3H24	1	•	•	•	X					
	Red LED	T13657-2H24	1	•	•	•	X					
	Potentiometer	T10812-119	4	•	•	•	X					
5S5	LED Lens, Clear (Includes Item 5S8 "O" Ring)	S23093-1	2	•	•	•	X					
5S6	Potentiometer Spacer	S18280	4	•	•	•	X					
5S7	Rheostat Control Knob	T13639-3	4	•	•	•	X					
5S8	Retaining "O" Ring	S23094-1	2	•	•	•	X					
5S9	3 Way Switch	T10800-46	1	•	•	•	X					



Index of Sub Assemblies
 Sub Assembly Illustration
 Index of Sub Assemblies
 Sub Assembly Illustration
 Index of Sub Assemblies
 Sub Assembly Illustration
 Index of Sub Assemblies
 Sub Assembly Illustration

Indicates a change this printing.

Use only the parts marked "x" in the column under the heading number called for in the model index page.

ITEM	DESCRIPTION	PART NO.	QTY.	1	2	3	4	5	6	7	8	9
5T	Thread Forming Screw	S9225-92	2	X	X	X	X					
6	Tool Tray	G3526	1	X	X	X	X					
7A	Switch Assembly	S7670	1	X	X	X	X					
7B	Self Tapping Screw	S8025-115	2	X	X	X	X					
8A	Connector & Lead Assembly	S13100-245	1	X	X	•	•					
8A	Connector & Lead Assembly	S13100-264	1	•	•	X	X					
8B	Self Tapping Screw	S8025-113	2	X	X	X	X					
9A	Door	L11604	1	X	X	X	X					
9B	Pin (Door)	S22921	2	X	X	X	X					
9C	Plain Washer	S9262-30	2	X	X	X	X					
9D	Lock Washer	E106A-14	2	X	X	X	X					
9E	Hex Lock Nut	T9187	2	X	X	X	X					
9F	Decal (Door Warning) (L11672-9 - Part of L11672)	NSS	1	X	X	•	•					
9F	Decal (Door Warning) (L13115-9 - Part of L13115)	NSS	1	•	•	X	X					
9G	Thread Forming Screw	S9225-87	2	X	X	X	X					
10	Nameplate (G3994-2 - Part of G3994)	NSS	1	X	•	•	•					
10	Nameplate (G3996-2 - Part of G3996)	NSS	1	•	X	•	•					
10	Nameplate (G5670-2 - Part of G5670)	NSS	1	•	•	X	•					
10	Nameplate (G5672-2 - Part of G5672)	NSS	1	•	•	•	X					
11A	Plug & Lead Assembly	S18250-774	1	X	X	X	X					
11B	Grommet	S18543-4	1	X	X	X	X					
12A	Output Terminal Molded Assembly	S16656-4	2	X	X	X	X					
12B	Thread Forming Screw (Not Shown)	S9225-88	4	X	X	X	X					
12C	Output Stud Nut	T3960	2	X	X	X	X					
13A	Polarity Switch Assembly	L7390-1	1	X	X	X	X					
13B	1/4-20 HN	CF000017	2	X	X	X	X					
13C	Lock Washer	T9860-6	2	X	X	X	X					
14A	Polarity Switch Jumper	S18234	1	X	X	X	X					
14B	5/16-18 HN	CF000029	1	X	X	X	X					
15A	Handle (Molded)	M15248	1	X	X	X	X					
15B	Thread Forming Screw	S9225-88	1	X	X	X	X					
17	Plug & Lead Assembly (P3 Jumper)	S18250-777	1	X	•	X	•					
17	Plug & Lead Assembly (P7 Jumper)	S18250-776	1	•	X	•	X					
18A	Copper Strap	S11109-14	1	X	X	•	•					
18B	5/16-18 HN	CF000029	1	X	X	X	X					
18C	Plain Washer (Not Shown)	S9262-30	1	X	X	X	X					
18D	Lock Washer (Not Shown)	E106A-14	1	X	X	X	X					
19A	Diode	T12705-67	1	X	X	•	•					
19B	Lock Washer	T9695-1	1	X	X	•	•					
19C	#10-32 HN	CF000011	1	X	X	•	•					
20A	Control P.C. Board Assembly	G3909-[]	1	X	X	•	•					
20A	Control P.C. Board Assembly	G4763-[]	1	•	•	X	X					
20B	Plastic Expansion Nut P.C. Board Standoff	S14020-10	8	X	X	X	X					
20C	Self Tapping Screw	S8025-115	8	X	X	X	X					
21	Decal (Work) (L11672-1 - Part of L11672)	NSS	1	X	X	•	•					
21	Decal (Work) (L13115-1 - Part of L13115)	NSS	1	•	•	X	X					
22	Decal (Stick Electrode) (L11672-2 - Part of L11672)	NSS	1	X	X	•	•					
22	Decal (Stick Electrode) (L13115-2 - Part of L13115)	NSS	1	•	•	X	X					
23	Decal (Remote) (L11672-3 - Part of L11672)	NSS	1	X	X	•	•					
23	Decal (Remote) (L13115-3 - Part of L13115)	NSS	1	•	•	X	X					



Index of Sub Assemblies
 Sub Assembly Illustration
 Index of Sub Assemblies
 Sub Assembly Illustration
 Index of Sub Assemblies
 Sub Assembly Illustration
 Index of Sub Assemblies
 Sub Assembly Illustration

Indicates a change this printing.

Use only the parts marked "x" in the column under the heading number called for in the model index page.

ITEM	DESCRIPTION	PART NO.	QTY.	1	2	3	4	5	6	7	8	9
25A	AC Relay	S14293-8	2	•	X	•	X					
25B	Thread Forming Screw	S9225-62	4	•	X	•	X					
25C	Plain Washer	S9262-3	4	•	X	•	X					
25D	Lock Washer	T9695-2	4	•	X	•	X					
25E	#6-32 HN	CF000005	4	•	X	•	X					
26	Identification Sticker (CR2)	T14798-2	1	•	X	•	X					
27	Identification Sticker (CR3)	T14798-3	1	•	X	•	X					
28A	Rectifier Bridge	T13637-6	1	X	•	X	•					
28A	Rectifier Bridge	T13637-6	2	•	X	•	X					
28B	Thread Forming Screw	S9262-88	1	X	•	X	•					
28B	Thread Forming Screw	S9262-88	2	•	X	•	X					
28D	Lock Washer	T9695-1	1	X	•	X	•					
28D	Lock Washer	T9695-1	2	•	X	•	X					
28E	#10-24 HN	CF000010	1	X	•	X	•					
28E	#10-24 HN	CF000010	2	•	X	•	X					
29A	Protection PC Board Asbly	M16062-[]	1	X	X	X	X					
29B	Sems Screw	T10082-27	3	X	X	X	X					
30A	TIG Advanced Control PC Board Asbly (Not Shown)	G4761-[]	1	•	X	•	X					
30B	Option PC Board Mounting Panel (Not Shown)	S25391	1	•	X	•	•					
30B	Option PC Board Mounting Panel (Not Shown)	S25391-1	1	•	•	•	X					
30C	PC Board Mounting Standoff (Not Shown)	S19300-6	4	•	X	•	X					
31A	Micro Switch Bracket (Not Shown)	S25397	1	•	X	•	X					
31B	Micro Switch (Not Shown)	T12485-2	1	•	X	•	X					
31C	#3-48 x .875 RHS (Not Shown)	CF000138	2	•	X	•	X					
31D	Plain Washer (Not Shown)	S9262-39	2	•	X	•	X					
31E	Lock Washer (Not Shown)	T4291-B	2	•	X	•	X					
31F	#3-48 HN (Not Shown)	CF000139	2	•	X	•	X					

Note: When ordering new printed circuit boards indicate the dash number [] of the "Old" board that is to be replaced. This will aid Lincoln in supplying the correct and latest board along with any necessary jumpers or adapters. The dash number brackets [] have purposely been left blank so as to eliminate errors, confusion and updates.

Index of Sub Assemblies
 Sub Assembly Illustration
 Index of Sub Assemblies
 Sub Assembly Illustration
 Index of Sub Assemblies
 Sub Assembly Illustration
 Index of Sub Assemblies
 Sub Assembly Illustration

Arc Starter & Bypass Assembly

Index of Sub Assemblies

Index of Sub Assemblies

Index of Sub Assemblies

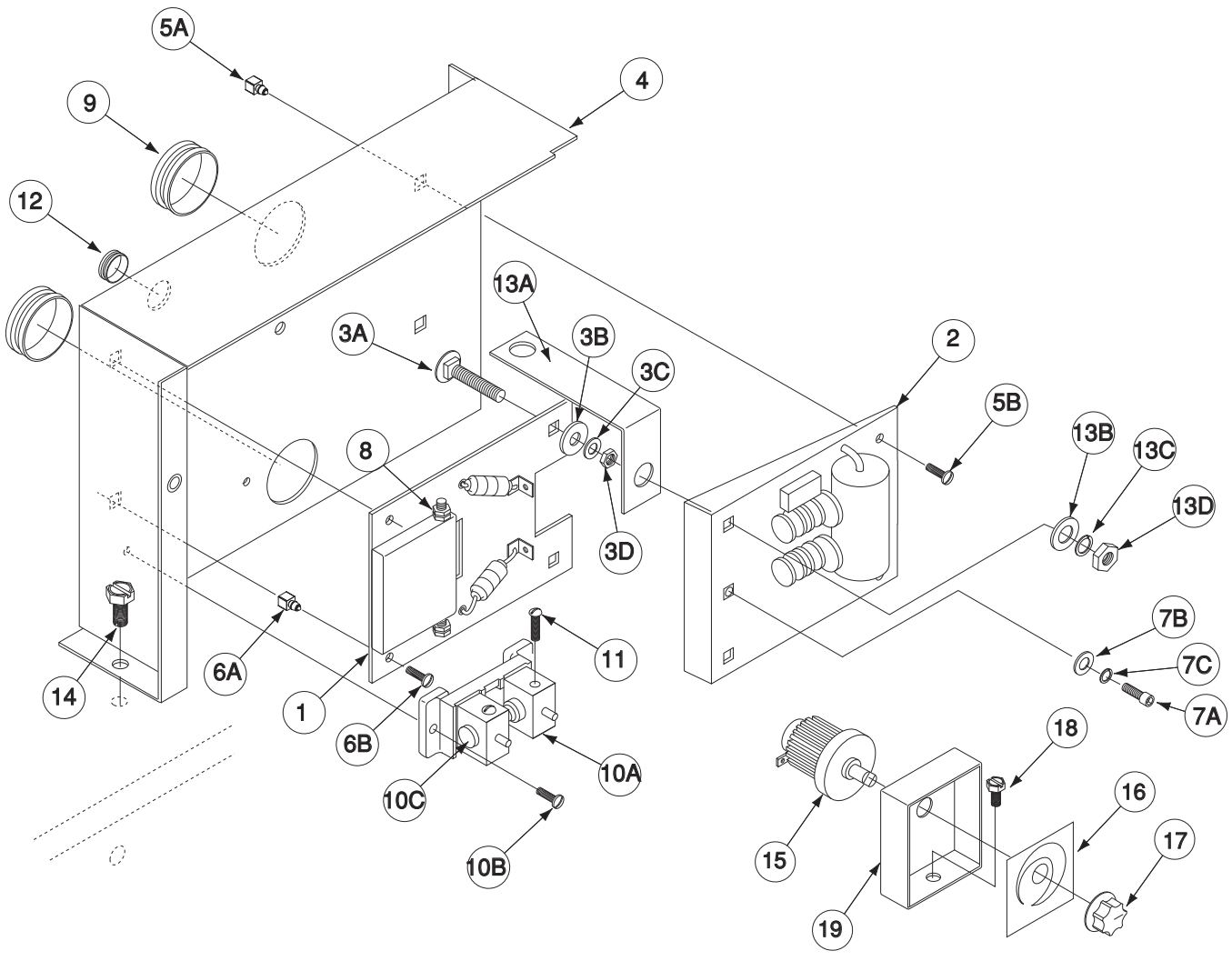
Index of Sub Assemblies

Part Numbers

Part Numbers

Part Numbers

Part Numbers



Indicates a change this printing.

Use only the parts marked "x" in the column under the heading number called for in the model index page.

ITEM	DESCRIPTION	PART NO.	QTY.	1	2	3	4	5	6	7	8	9
1	Arc Starter & Bypass Assembly, Includes:	L11597-2	1	X	•							
1	Arc Starter & Bypass Assembly, Includes:	L11597-3	1	•	X							
1	Arc Starter Assembly	M19835	1	X	•							
1	Arc Starter Assembly	M19835-1	1	•	X							
2	Bypass/Stabilizer P.C. Board Assembly	L10121-[]	1	X	X							
3A	Carriage Bolt	T11827-23	2	X	X							
3B	Plain Washer	S9262-98	2	X	X							
3C	Lock Washer	T9695-17	2	X	X							
3D	1/4-20 HN	CF000017	2	X	X							
4	Arc Starter Support	L11650	1	X	X							
5A	Expansion Plastic	S14020-3	2	X	X							
5B	Self Tapping Screw	S8025-114	2	X	X							
6A	Expansion Nut Plastic	S14020-1	2	X	X							
6B	Self Tapping Screw	S8025-77	2	X	X							
7A	Socket Head Cap Screw	T9447-21	1	X	X							
7B	Plain Washer	S9262-3	1	X	X							
7C	Lock Washer	T9695-3	1	X	X							
8	#10-24 HN	CF000010	2	X	X							
9	Bushing	T12380-8	2	X	X							
10A	Spark Gap Assembly	S16876	1	X	X							
10B	Thread Forming Screw	S9225-88	2	X	X							
10C	Electrode	T11236-1	2	X	X							
11	Sems Screw	T10082-12	2	X	X							
12	Bushing	T12380-3	1	X	X							
13A	High Frequency Lead	S25215	1	X	X							
13B	Plain Washer	S9262-98	1	X	X							
13C	Lock Washer	T9695-17	1	X	X							
13D	1/4-20 HN	CF000017	1	X	X							
14	Thread Forming Screw	S9225-92	1	X	X							
15	Rheostat	T10812-99	1	•	X							
16	Decal (L11672-11 - Part of L11672) (Code 11371)	NSS	1	•	X							
16	Decal (L13115-11 - Part of L13115) (Code 11163)	NSS	1	•	X							
17	Rheostat Control Knob	T13639-3	1	•	X							
18	Thread Forming Screw	S9225-92	1	•	X							
19	Hi Freq Intensity Bracket	M19959	1	•	X							

Note: When ordering new printed circuit boards indicate the dash number [] of the "Old" board that is to be replaced. This will aid Lincoln in supplying the correct and latest board along with any necessary jumpers or adapters. The dash number brackets [] have purposely been left blank so as to eliminate errors, confusion and updates.



Index of Sub Assemblies
Sub Assembly Illustration
Index of Sub Assemblies
Sub Assembly Illustration
Index of Sub Assemblies
Sub Assembly Illustration
Index of Sub Assemblies
Sub Assembly Illustration

Case Back Assembly

Index of Sub Assemblies

Part Numbers

Index of Sub Assemblies

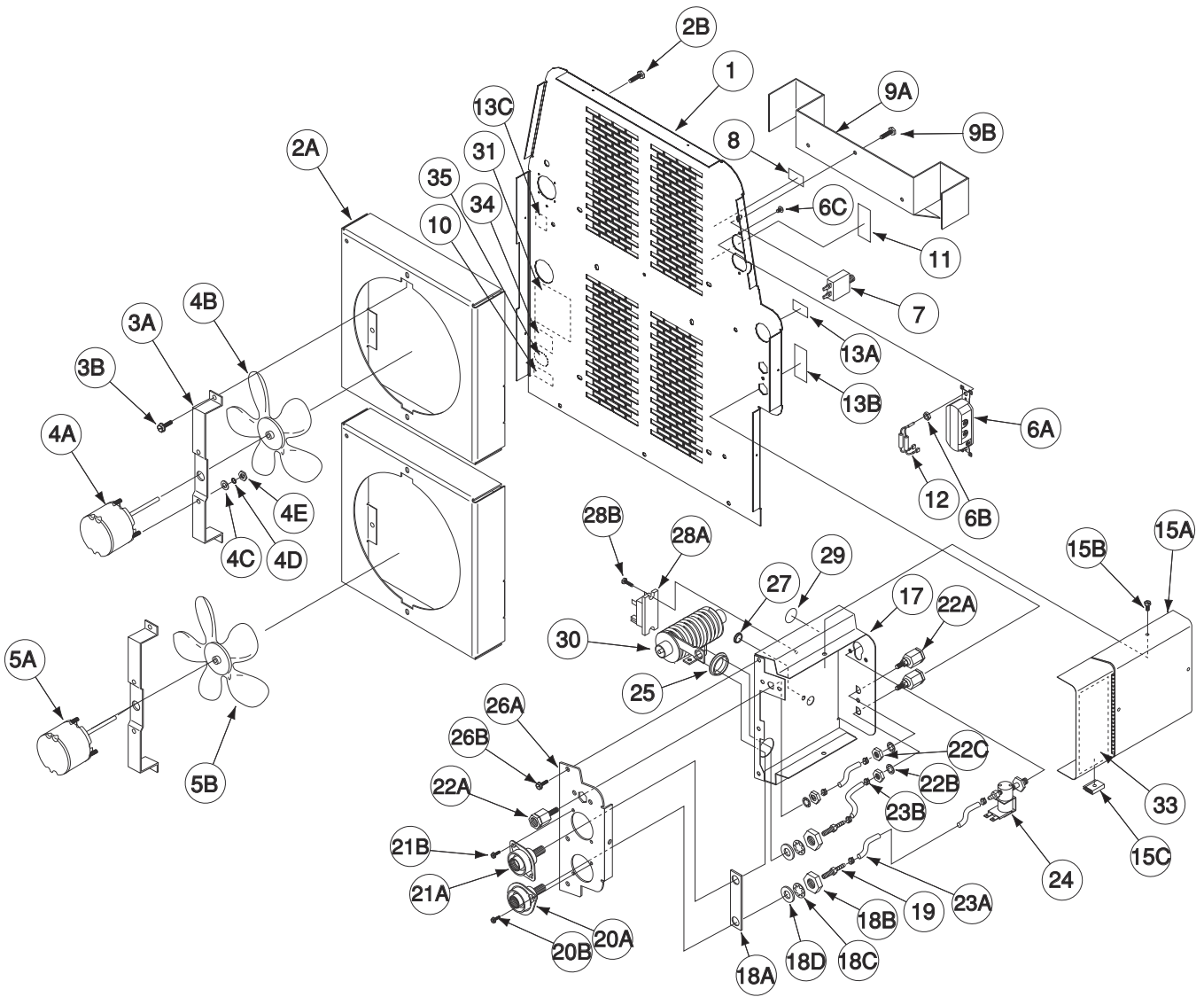
Part Numbers

Index of Sub Assemblies

Part Numbers

Index of Sub Assemblies

Part Numbers



Indicates a change this printing.

Use only the parts marked "x" in the column under the heading number called for in the model index page.

ITEM	DESCRIPTION	PART NO.	QTY.	1	2	3	4	5	6	7	8	9
1	Case Back Asbly, Includes:	G3970-2	1	X	•	•	•					
1	Case Back Asbly, Includes:	G3971-2	1	•	X	•	•					
1	Case Back Asbly, Includes:	G5652-1	1	•	•	X	•					
1	Case Back Asbly, Includes:	G5656-1	1	•	•	•	X					
1	Case Back	G3944-1	1	X	X	•	•					
1	Case Back	G5649-1	1	•	•	X	X					
2A	Fan Shroud	L11587	1	X	•	X	•					
2A	Fan Shroud	L11587	2	•	X	•	X					
2B	Thread Forming Screw	S9225-92	2	X	•	X	•					
2B	Thread Forming Screw	S9225-92	6	•	X	•	X					
3A	Fan Bracket	M20039	1	X	•	X	•					
3A	Fan Bracket	M20039	2	•	X	•	X					
3B	Thread Forming Screw	S9225-92	2	X	•	X	•					
3B	Thread Forming Screw	S9225-92	4	•	X	•	X					
4A	Fan Motor	M8895-7	1	X	•	•	•					#
4A	Fan Motor	M8895-8	1	•	X	•	•					#
4A	Fan Motor	S25857-2	1	•	•	X	X					#
4B	Fan Blade	M8678-2	1	X	X	X	X					
4C	Plain Washer	S9262-3	2	X	X	X	X					
4D	Lock Washer	T4291-A	2	X	X	X	X					
4E	#8-32 HN	CF000042	2	X	X	X	X					
5A	Fan Motor	M8895-7	1	•	X	•	X					
5B	Fan Blade	M8678-2	1	•	X	•	X					
5C	Plain Washer (Not Shown)	S9262-3	2	•	X	•	X					
5D	Lock Washer (Not Shown)	T4291-A	2	•	X	•	X					
5E	#8-32 HN (Not Shown)	CF000042	2	•	X	•	X					
6A	Duplex Receptacle (15A-125V)	S11668-1	1	X	X	X	X					
6B	#10-24 HN	CF000010	2	X	X	X	X					
6C	Thread Forming Screw	S9225-36	2	X	X	X	X					
7	Circuit Breaker	T12287-22	1	X	X	X	X					
8	Decal (Circuit Breaker) (L11672-7 - Part of L11672)	NSS	1	X	X	•	•					
8	Decal (Circuit Breaker) (L13115-7 - Part of L13115)	NSS	1	•	•	X	X					
9A	Filler Rod Holder & Air Baffle	M19774	1	X	X	X	X					
9B	Thread Forming Screw	S9225-92	2	X	•	X	•					
9B	Thread Forming Screw	S9225-90	2	•	X	•	X					
9C	Rivet (Not Shown)	T12584-6	1	X	X	X	X					
10	Decal (Ground Warning)	T13259	1	X	X	•	•					
10	Decal (Ground Warning)	T13259-2	1	•	•	X	X					
11	Decal (Receptacle) (L11672-6 - Part of L11672)	NSS	1	X	X	•	•					
11	Decal (Receptacle) (L13115-6 - Part of L13115)	NSS	1	•	•	X	X					
12	115V Receptacle Bypass Assembly	S19450	1	X	X	X	X					
13A	Decal (Gas Input) (L11672-4 - Part of L11672)	NSS	1	X	X	•	•					
13A	Decal (Gas Input) (L13115-4 - Part of L13115)	NSS	1	•	•	X	X					
13B	Decal (Coolant In/Out) (L11672-5 - Part of L11672)	NSS	1	X	X	•	•					
13B	Decal (Coolant In/Out) (L13115-5 - Part of L13115)	NSS	1	•	•	X	X					
13C	Warning Decal (L11672-13) (Part of L11672)	NSS	1	X	X	•	•					
13C	Warning Decal (L13115-13) (Part of L13115)	NSS	1	•	•	X	X					
14	Circuit Breaker (Not Shown)	T12287-30	1	X	X	X	X					
15A	Torch Connection Box Cover Assembly	L11584	1	X	X	X	X					
15B	Self Tapping Screw	S8025-112	4	X	X	X	X					
15C	Magnetic Catch Latch	S25305	1	X	X	X	X					



Index of Sub Assemblies
 Sub Assembly Illustration
 Index of Sub Assemblies
 Sub Assembly Illustration
 Index of Sub Assemblies
 Sub Assembly Illustration
 Index of Sub Assemblies
 Sub Assembly Illustration

Indicates a change this printing.

Use only the parts marked "x" in the column under the heading number called for in the model index page.

ITEM	DESCRIPTION	PART NO.	QTY.	1	2	3	4	5	6	7	8	9
17	Torch Connection Box Asbly, Includes:	L11585-1	1	X	X	•	•					
	Torch Connection Box Asbly, Includes:	L12925-1	1	•	•	X	X					
17	Torch Connection Box	L11582	1	X	X	•	•					
17	Torch Connection Box	L12924	1	•	•	X	X					
18A	Torch Connection Strap	S24629	1	X	X	X	X					
18B	5/8-11 HJN	CF000140	2	X	X	X	X					
18C	Lock Washer	T9695-16	2	X	X	X	X					
18D	Plain Washer	S9262-41	2	X	X	X	X					
19	Hose Nipple (Male)	T14557-8	2	X	X	X	X					
20A	Output Terminal Molding	M13896-8	1	X	X	X	X					
20B	Thread Forming Screw	S9225-88	2	X	X	X	X					
21A	Output Terminal Molding	M13896-6	1	X	X	X	X					
21B	Self Tapping Screw	S9225-88	2	X	X	X	X					
22A	Connector	T14557-15	3	X	X	X	X					
22B	Lock Washer	T9695-8	3	X	X	X	X					
22C	1/2-13 HJN	CF000054	3	X	X	X	X					
23A	Hose	T10642-255	3	X	X	X	X					
23B	Hose Clamp	S20710-6	6	X	X	X	X					
24	Solenoid Valve Asbly	M17294-15	1	X	X	•	•					
24	Solenoid Valve Asbly	M17294-10	1	•	•	X	X					
24A	Plain Washer (Not Shown)	S9262-149	1	•	•	X	X					
24B	Conduit Locknut (Not Shown)	T14370-1	1	•	•	X	X					
25	Bushing	T12380-8	1	X	X	X	X					
26A	Torch Connection Panel	M19793	1	X	X	X	X					
26B	Thread Forming Screw	S9225-92	5	X	X	X	X					
27	Bushing	T12380-3	1	X	X	X	X					
28A	DC Relay	S15122-14	1	X	X	X	X					
28B	Self Tapping Screw	S8025-115	2	X	X	X	X					
29	Identification Sticker (CR4)	T14798-4	1	X	X	X	X					
30	High Freq. Transformer Assembly	G4079	1	X	X	X	X					
31	Rating Plate	S21132-16	1	X	•	•	•					
31	Rating Plate	S21132-17	1	•	X	•	•					
31	Rating Plate	S21132-28	1	•	•	X	•					
31	Rating Plate	S21132-29	1	•	•	•	X					
33	Torch Connection Decal (L11672-8 - Part of L11672)	NSS	1	X	X	•	•					
33	Torch Connection Decal (L13115-8 - Part of L13115)	NSS	1	•	•	X	X					
34	Country of Origin Decal	S24727-1	1	X	X	X	X					
35	CCC Decal	T13086-191	1	X	X	X	X					



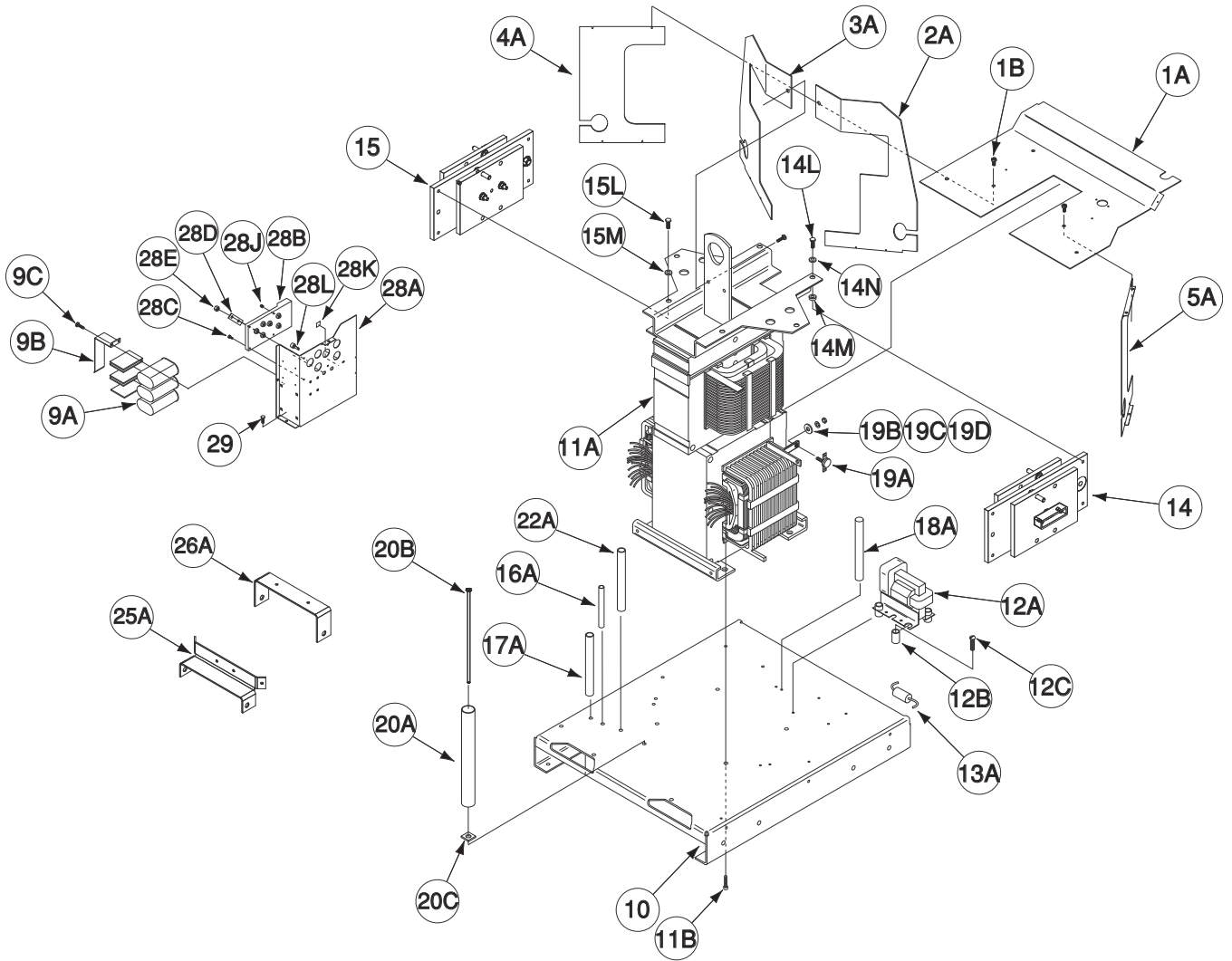
Index of Sub Assemblies
 Sub Assembly Illustration
 Index of Sub Assemblies
 Sub Assembly Illustration
 Index of Sub Assemblies
 Sub Assembly Illustration
 Index of Sub Assemblies
 Sub Assembly Illustration

NOTES

Precision TIG® 275 & 375



Center Assembly



Indicates a change this printing.

Use only the parts marked "x" in the column under the heading number called for in the model index page.

ITEM	DESCRIPTION	PART NO.	QTY.	1	2	3	4	5	6	7	8	9
1A	Horizontal Baffle	L11741-1	1	X	•	X	•					
1A	Horizontal Baffle	L11752-1	1	•	X	•	•					
1A	Horizontal Baffle	L11752	1	•	•	•	X					
1B	Thread Forming Screw	S9225-92	4	X	X	X	X					
2A	Right Upper Vertical Baffle	L11740	1	X	•	X	•					
2A	Right Upper Vertical Baffle	L11751	1	•	X	•	X					
2B	Thread Forming Screw (Not Shown)	S9225-92	1	X	X	X	X					
3A	Left Upper Vertical Baffle	L11739	1	X	•	X	•					
3A	Left Upper Vertical Baffle	L11750	1	•	X	•	X					
3B	Thread Forming Screw (Not Shown)	S9225-92	1	X	X	X	X					
4A	Left Vertical Baffle	L11742	1	X	•	X	•					
4A	Left Vertical Baffle	L11753	1	•	X	•	X					
4B	Thread Forming Screw (Not Shown)	S9225-92	1	X	X	X	X					
5A	Right Vertical Baffle	L11743	1	X	•	X	•					
5A	Right Vertical Baffle	L11754	1	•	X	•	X					
5B	Thread Forming Screw (Not Shown)	S9225-92	1	X	X	X	X					
6A	Bushing (Not Shown)	T12380-1	2	X	•	X	•					
6A	Bushing (Not Shown)	T12380-1	3	•	X	•	X					
6B	Bushing (Not Shown)	T12380-8	1	X	•	X	•					
7A	Resistor (50W) (Not Shown)	S10404-134	6	•	•	X	•					
7A	Resistor (50W) (Not Shown)	S10404-134	2	•	•	•	X					
7B	Resistor (25W) (Not Shown)	S10404-114	4	•	•	•	X					
7C	#10-24 x 5.00 RHS (Not Shown)	CF000045	As Req	•	•	X	X					
7D	Insulating Washer (Not Shown)	T4479-A	As Req	•	•	X	X					
7E	Plain Washer (Not Shown)	S9262-27	As Req	•	•	X	X					
7F	Lock Washer (Not Shown)	T9695-1	As Req	•	•	X	X					
7G	#10-24 HN (Not Shown)	CF000010	As Req	•	•	X	X					
9A	Power Factor Capacitor	M13707-6	3	•	•	•	X					
9B	Capacitor Bracket	M19944	1	•	•	•	X					
9C	Thread Forming Screw	S9225-92	3	•	•	•	X					
	Center Asbly (G3967-3), Includes:	NSS	1	X	•	•	•					
	Center Asbly (G3968-3), Includes:	NSS	1	•	X	•	•					
	Center Asbly (G5657-2), Includes:	NSS	1	•	•	X	•					
	Center Asbly (G5655-2), Includes:	NSS	1	•	•	•	X					
10	Base Assembly	G3898	1	X	X	X	X					
11A	Transformer & Choke Welded Asbly	G3964-2	1	X	•	•	•					
11A	Transformer & Choke Welded Asbly	G3965-2	1	•	X	•	•					
11A	Transformer & Choke Welded Asbly	G5702-2	1	•	•	X	•					
11A	Transformer & Choke Welded Asbly	G5700-2	1	•	•	•	X					
11B	Thread Forming Screw	S9225-53	4	X	X	X	X					
11C	Lock Washer (Not Shown)	T9860-4	4	X	X	X	X					
11D	3/8 -16 HN (Not Shown)	CF000067	4	X	X	X	X					
12A	High Voltage Transformer	S25387-2	1	X	X	•	•					
12A	High Voltage Transformer	S25387-3	1	•	•	X	X					
12B	Standoff	T14539	4	X	X	X	X					
12C	Self Tapping Screw	S8025-100	4	X	X	X	X					
13A	Capacitor	T11577-64	1	X	X	X	X					
13B	Lead Clamp (Not Shown)	T12563-21	1	X	X	X	X					
13C	Self Tapping Screw (Not Shown)	S8025-111	1	X	X	X	X					



Index of Sub Assemblies
 Sub Assembly Illustration
 Index of Sub Assemblies
 Sub Assembly Illustration
 Index of Sub Assemblies
 Sub Assembly Illustration
 Index of Sub Assemblies
 Sub Assembly Illustration

Indicates a change this printing.

Use only the parts marked "x" in the column under the heading number called for in the model index page.

ITEM	DESCRIPTION	PART NO.	QTY.	1	2	3	4	5	6	7	8	9
14	Rectifier Heat Sink Asbly	L11621	1	X	•	•	•					
14	Rectifier Heat Sink Asbly	G3985-3	1	•	X	•	•					
14	Rectifier Heat Sink Asbly	L11621-1	1	•	•	X	•					
14	Rectifier Heat Sink Asbly	G3985-2	1	•	•	•	X					
14L	Thread Forming Screw	S9225-17	2	X	X	X	X					
14M	Insulator	T11267-A	2	X	•	X	•					
14M	Insulator	T11267-A	3	•	X	•	X					
14N	Insulator	T11267-B	2	X	•	X	•					
14N	Insulator	T11267-B	3	•	X	•	X					
14P	Heat Sink Insulation (Not Shown)	M19979	1		X	•	X					
15	Rectifier Heat Sink Asbly	L11621-1	1	X	•	•	•					
15	Rectifier Heat Sink Asbly	G3985-2	1	•	X	•	•					
15	Rectifier Heat Sink Asbly	L11621-2	1	•	•	X	•					
15	Rectifier Heat Sink Asbly	G3985-1	1	•	•	•	X					
15L	Thread Forming Screw	S9225-17	2	X	X	X	X					
15M	Insulator	T11267-A	2	X	•	X	•					
15M	Insulator	T11267-A	3	•	X	•	X					
15N	Insulator (Not Shown)	T11267-B	2	X	•	X	•					
15N	Insulator (Not Shown)	T11267-B	3	•	X	•	X					
15P	Heat Sink Insulation (Not Shown)	M19979	1	•	X	•	X					
16A	Resistor (5/50W)	S10404-134	1	X	X	•	•					
16B	#10-24 x 5.00 RHS (Not Shown)	CF000045	1	X	X	•	•					
16C	Insulating Washer (Not Shown)	T4479-A	2	X	X	•	•					
16D	Plain Washer (Not Shown)	S9262-27	1	X	X	•	•					
16E	Lock Washer (Not Shown)	T9695-1	2	X	X	•	•					
16F	#10-24 HN (Not Shown)	CF000010	1	X	X	•	•					
17A	Resistor (20/100W)	S10404-130	1	X	X	•	•					
17B	#10-24 x 7.50 RHS (Not Shown)	CF000191	1	X	X	•	•					
17C	Insulating Washer (Not Shown)	T4479-A	2	X	X	•	•					
17D	Plain Washer (Not Shown)	S9262-27	1	X	X	•	•					
17E	Lock Washer (Not Shown)	T9695-1	2	X	X	•	•					
17F	#10-24 HN (Not Shown)	CF000010	1	X	X	•	•					
18A	Resistor (200/100W)	S10404-121	1	X	X	X	X					
18B	#10-24 x 7.50 RHS (Not Shown)	CF000191	1	X	X	X	X					
18C	Insulating Washer (Not Shown)	T4479-A	2	X	X	X	X					
18D	Plain Washer (Not Shown)	S9262-27	1	X	X	X	X					
18E	Lock Washer (Not Shown)	T9695-1	2	X	X	X	X					
18F	#10-24 HN (Not Shown)	CF000010	1	X	X	X	X					
19A	Thermostat	T13359-7	1	X	•	X	•					
19A	Thermostat	T13359-8	1	•	X	•	X					
19B	Plain Washer	S9262-3	1	X	X	X	X					
19C	Lock Washer	E106A-13	1	X	X	X	X					
19D	#6-32 HN	CF000005	1	X	X	X	X					
20A	Resistor (50/225W)	S10404-125	1	X	X	X	X					
20B	Carriage Bolt	T11827-59	1	X	X	X	X					
20C	Insulating Washer	T9764-6	2	X	X	X	X					
20D	Flat Washer (Not Shown)	S9262-98	1	X	X	X	X					
20E	Lock Washer (Not Shown)	E106A-2	1	X	X	X	X					
20F	1/420 HN (Not Shown)	CF000017	1	X	X	X	X					



Index of Sub Assemblies
 Sub Assembly Illustration
 Index of Sub Assemblies
 Sub Assembly Illustration
 Index of Sub Assemblies
 Sub Assembly Illustration
 Index of Sub Assemblies
 Sub Assembly Illustration

Indicates a change this printing.

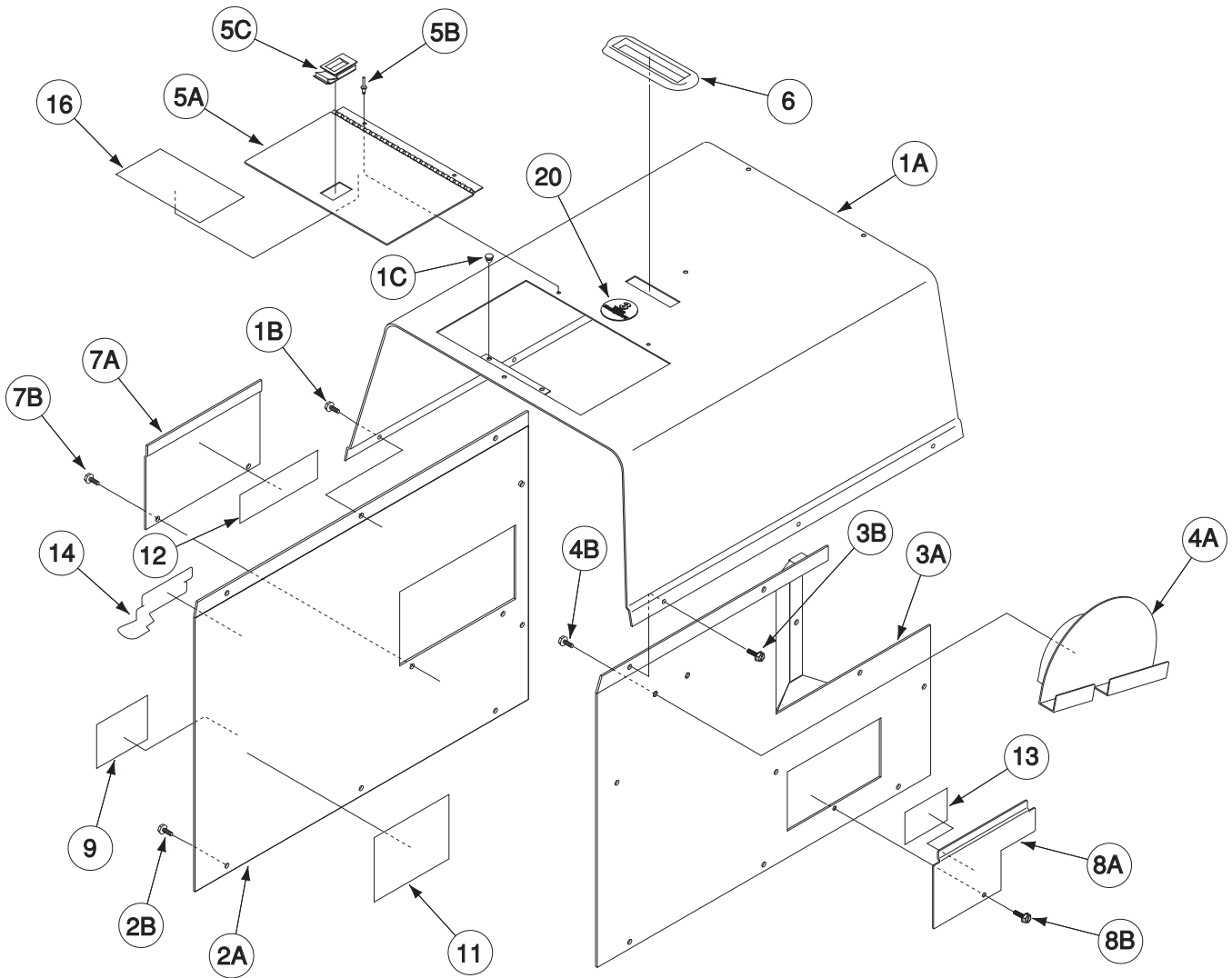
Use only the parts marked "x" in the column under the heading number called for in the model index page.

ITEM	DESCRIPTION	PART NO.	QTY.	1	2	3	4	5	6	7	8	9
21A	Shunt & Lead Assembly (Not Shown)	S21170-8	1	X	X	X	X					
21B	5/16-18 x 1.25 HHCS (Not Shown)	CF000028	1	X	•	X	•					
21B	5/16-18 x 1.00 HHCS (Not Shown)	CF000062	1	X	•	X	•					
21B	5/16-18 x 1.00 HHCS (Not Shown)	CF000062	2	•	X	•	X					
21C	Plain Washer (Not Shown)	S9262-30	4	X	X	X	X					
21D	Lock Washer (Not Shown)	E106A-14	2	X	X	X	X					
21E	5/16-18 HN (Not Shown)	CF000029	2	X	X	X	X					
22A	Resistor (8/30W)	S10404-131	1	•	X	•	X					
22B	Thru Bolt (Not Shown)	T9781-34	1	•	X	•	X					
22C	Insulating Washer (Not Shown)	T9764-6	2	•	X	•	X					
22D	Flat Washer (Not Shown)	S9262-98	2	•	X	•	X					
22E	Lock Washer (Not Shown)	E106A-2	2	•	X	•	X					
22F	1/4-20 HN (Not Shown)	CF000017	2	•	X	•	X					
23	Plug & Lead Assembly (Not Shown)	S18250-780	1	X	X	X	X					
24A	Shunt Angle Bracket (Not Shown)	S25358	1	•	X	•	X					
24B	5/16-18 x 1.25 HHCS (Not Shown)	CF000028	1	•	X	•	X					
24C	Plain Washer (Not Shown)	S9262-30	2	•	X	•	X					
24D	Lock Washer (Not Shown)	E106A-14	1	•	X	•	X					
24E	5/16-18 HN (Not Shown)	CF000029	1	•	X	•	X					
25A	Rectifier Support Bracket	M19983	1	X	•	X	•					
25A	Rectifier Support Bracket	L11808	1	•	X	•	X					
25B	Thread Forming Screw (Not Shown)	S9225-45	2	X	•	X	•					
25B	Thread Forming Screw (Not Shown)	S9225-92	4	•	X	•	X					
25C	Thread Forming Screw (Not Shown)	S9225-17	2	X	•	X	•					
25D	Insulator (Not Shown)	T11267-A	2	X	•	X	•					
25E	Insulator (Not Shown)	T11267-B	2	X	•	X	•					
26A	Rectifier Bracket	M19984	1	X	•	X	•					
26B	Thread Forming Screw (Not Shown)	S9225-17	2	X	•	X	•					
26C	Insulator (Not Shown)	T11267-A	2	X	•	X	•					
26D	Insulator (Not Shown)	T11267-B	2	X	•	X	•					
	Reconnect Panel Assembly, Includes:	L11598-2	1	X	X	X	X					
28A	Reconnect Panel Support	L11595	1	X	X	X	X					
28B	Reconnect Panel Molded Asbly	M14437-2	1	X	X	X	X					
28C	Self Tapping Screw	S8025-15	4	X	X	X	X					
28D	Reconnecting Panel Link	S11012-36	1	X	X	X	X					
28E	3/8-16 HN	CF000067	2	X	X	X	X					
28F	Plain Washer (Not Shown)	S9262-30	6	X	X	X	X					
28G	Lock Washer (Not Shown)	E106A-14	6	X	X	X	X					
28H	5/16-18 HHCS (Not Shown)	CF000040	6	X	X	X	X					
28J	Set Screw	S11604-48	3	X	X	X	X					
28K	Decal Earth Ground	T13260-4	1	X	X	X	X					
28L	Receptacle	T14530-1	2	X	X	X	X					
28M	Bushing (Not Shown)	T12380-3	1	X	X	X	X					
28N	Ground Screw Asbly (Not Shown)	S18922-6	1	X	X	X	X					
29	Thread Forming Screw	S9225-92	1	X	X	X	X					
30	Ground Screw Assembly (Not Shown)	S18922-6	2	X	X	X	X					



Index of Sub Assemblies
 Sub Assembly Illustration
 Index of Sub Assemblies
 Sub Assembly Illustration
 Index of Sub Assemblies
 Sub Assembly Illustration
 Index of Sub Assemblies
 Sub Assembly Illustration

Cover Assembly



Index of Sub Assemblies
Part Numbers

Index of Sub Assemblies
Part Numbers

Index of Sub Assemblies
Part Numbers

Index of Sub Assemblies
Part Numbers

Indicates a change this printing.

Use only the parts marked "x" in the column under the heading number called for in the model index page.

ITEM	DESCRIPTION	PART NO.	QTY.	1	2	3	4	5	6	7	8	9
1A	Roof	G3958	1	X	X	X	X					
1B	Thread Forming Screw	S8025-112	11	X	X	X	X					
1C	Door Bumper	T14882-1	2	X	X	X	X					
2A	Left Case Side	L11578	1	X	X	X	X					
2B	Thread Forming Screw	S8025-112	8	X	X	X	X					
3A	Right Case Welded Assembly	L11641	1	X	X	X	X					
3B	Thread Forming Screw	S8025-112	8	X	X	X	X					
4A	Torch & Cable Holster	L11596	1	X	X	X	X					
4B	Thread Forming Screw	S9225-92	2	X	X	X	X					
5A	Torch Parts Tray Door Assembly	M19783	1	X	X	X	X					
5B	Rivet	T12584-6	2	X	X	X	X					
5C	Door Latch	S21033	1	X	X	X	X					
6	Cover Seal	S12934	1	X	X	X	X					
7A	Reconnect Door	M19769	1	X	X	X	X					
7B	Thread Forming Screw	S8025-112	2	X	X	X	X					
8A	Spark Gap Door	M19955	1	X	•	X	•					
8A	Spark Gap Door	M19845	1	•	X	•	X					
8B	Thread Forming Screw	S8025-112	1	X	X	X	X					
9	Warning Decal	L8064-1	1	X	X	X	X					
11	Wiring Diagram	G4031-2	1	X	•	•	•					
11	Wiring Diagram	G4047-2	1	•	X	•	•					
11	Wiring Diagram	G5692-2	1	•	•	X	•					
11	Wiring Diagram	G5694-2	1	•	•	•	X					
12	Input Connection Diagram	S25247	1	X	X	•	•					
12	Input Connection Diagram	S25247-1	1	•	X	X						
13	Spark Gap Instructions & Warnings	S25248	1	X	X	•	•					
13	Spark Gap Instructions & Warnings	S25248-1	1	•	•	X	X					
14	Decal, Lincoln Logo w/Nascar	T13086-172	2	X	X	X	X					
16	Decal, Torch Parts Tray (L11672-10) (Part of L11672)	NSS	1	X	X	•	•					
16	Decal, Torch Parts Tray (L13115-10) (Part of L13115)	NSS	1	•	•	X	X					
20	Warranty Decal	S22127-7	1	•	•	X	X					



Index of Sub Assemblies
 Sub Assembly Illustration
 Index of Sub Assemblies
 Sub Assembly Illustration
 Index of Sub Assemblies
 Sub Assembly Illustration
 Index of Sub Assemblies
 Sub Assembly Illustration

NOTES

Precision TIG® 275 & 375

